



CITYCOLLECTION

— AUSTRALIA —

DRESSING FOR WORK MADE EASY



DRESSING FOR WORK

made easy!



The premise behind 'Dressing For Work Made Easy' is simple. Businesses require quality uniforms that are practical and reflect a strong brand identity. Staff perform better when they are comfortable and feel confident in their attire. Our entire uniform range is designed with you and your expectations in mind.

Contents

4-5	FIT FOR PURPOSE FIT FOR STYLE
6-7	EXCLUSIVELY INCLUSIVE
8-9	BRAND IT WITH COLOUR
10-13	SMART CASUAL
14-15	RECYCLED COLLECTION
16-35	CO-ORDINATES
36-57	TOPS & SHIRTS WOMEN
58-65	TOPS & SHIRTS MEN
66-83	SUITING SEPARATES
84-119	HEALTHCARE
120-133	PRODUCT DETAIL
134	GARMENT SIZE GUIDE
135	INDEX

Mens shirts left to right:

4773 Oliver, **4207** Gingham City Check,
4774 Denim, **4265** Pinfeather, **MSH80** Cotton Comfort,
4222 Pippa Check, **MSH80** Cotton Comfort

Fit for purpose. Fit for *style.*

Modern corporate

Our range is designed for the modern professional requiring contemporary looks that are adaptable in any work environment. All roles have been thoughtfully considered in the design phase of each style.

Designs are:

- Trans-seasonal
- Co-ordinating
- Current and on trend

Designed for every body

All designs consider the concept of *individuality*. That's why across our men's and women's range there are a variety of *shapes, styles* and *fabric blends* to suit most body types – because every body is different.

Garments are:

- Flattering to most shapes and sizes
- Tailored for a range of movements
- Designed to appeal to all staff

Colour options

Create a look that is best suited to your brand. Our versatile and strong colour stories offer a broad range of styles, giving you flexible options to create or enhance your brand. By co-ordinating designs within your preferred colour selection you'll project a really *strong, unified* and *successful* team image.

Garments promote:

- Stylish colour stories
- Individuality
- A strong team appearance

Quality fabric & high standards

Our garments reflect the ultimate standards in quality and design. The fabrics have been carefully researched and developed to be functional, practical, versatile and recycled, without compromising comfort. We seek the latest in fabric technology offering our clients the very best options available.

Quality means:

- Attention to detail
- Innovative and tested fabrics
- Superior manufacturing

Easy care & easy wear

We have selected high quality fabrics with easy care finishes to meet the daily demands of your corporate wardrobe. Our range includes *stretch* for extra movement, *breathable* options to keep you cool and dry, and *wrinkle-free* styles to keep you looking your best throughout the day.

Designs are:

- Quick drying
- Soft and comfortable
- Durable

Stock service & delivery

All styles are available on stock service. This ensures your team will be fitted with the best quality uniform, *quickly* and *efficiently*.

Orders are:

- Processed quickly
- Managed by our Customer Service team
- Always our priority
- Accessible via our online portal





2147 Ezylin® Meghan
FJK35-992 Dianna Jacket
FJ365 R Jeans

Uniforms that are exclusively *inclusive*

Be it size, shape or complexion,
we understand that “one fit”
doesn't suit all - that's why
our styles flatter every body!

Left to right:
2147 Ezylin® Meghan
FJ365 R Jeans

CA22T Pharmacy/Dental Top
CA3P So Ezy Pants

2284 Zip Back Tunic
FJ365 R Jeans







Brand it with *colour*

This page
2284 Zip Back Tunic

**Opposite page
clockwise from left**
2263 So Ezy
2299 Knit Woven
2221 Pippa Knit
2287 Grace
2281 Heart Print Tunic

By co-ordinating designs with your colour selection, you'll project a strong, unified and successful team image, whilst maintaining a sense of individuality.





DENIM SHIRT

Womens 2774 Long sleeve
65% Lyocell, 35% Cotton
(Soft Denim)
Sizes: 6 - 26, Semi-Fitted
Colour: Denim
with **FJ365** R Jeans

Mens 4774 Long sleeve
65% Lyocell, 35% Cotton
(Soft Denim)
Sizes: S - 5XL, Sports Fit
Colour: Denim
with **MJ365** R Jeans

Smart *casual*

Now your team can show some style with their uniforms. Featuring a range of professional, yet casual garments with versatile designs that are really easy to wear. Garment wash soft denim shirt added to the smart casual range.





Top row: 2275 Bella with FJ365 R Jeans, 2273 Ella with FJ365 R Jeans, 2147 Ezylin® Meghan with FJ365 R Jeans
Bottom row: 4207 Gingham City Check with MJ365 R Jeans, 4207 Gingham City Check with FJK35-992
Dianna Jacket and FJ365 R Jeans, 4145 Ezylin® with MJ365 R Jeans





THE **R** JEANS

Our R Jeans combine comfort and durability with ethical production practices and environmental sustainability benefits.

- ✓ Recycled polyester
- ✓ Modern styling and fit with 360° comfort
- ✓ Mid rise & slim straight leg
- ✓ Internal elastic waist for the perfect fit
- ✓ High-performance 4-Way Stretch
- ✓ Pre-washed for extra comfort



FJ365 R Jeans
 64% Cotton, 34% Recycled Polyester, 2% Spandex
 Sizes: 6 - 26. Modern Fit

MJ365 R Jeans
 64% Cotton, 34% Recycled Polyester, 2% Spandex
 Sizes: 77, 82, 87, 92, 97, 102, 107, 112, 117. Modern Fit



Shirts left to right:
4773 Oliver, **2175** City Stretch® Spot Hi-Lo
2225 City Overknit **MSH80** Cotton Comfort



The *Recycled* Collection

- ✓ 99% of the City Collection healthcare range is made from recycled yarns
- ✓ Sustainable and accredited products

2284 Zip Back Tunic
CA7P Jogger

As a uniform wholesaler, we have a responsibility to the wider community, not just the people who wear our garments.

Ethical Sourcing

We value the importance of sustainability and ethically manufactured products. We adopt ethical standards throughout our entire production process from selecting the right fabrics to manufacturers of the garment.

Packaging

City Collection is committed to using sustainable and accredited products – packaging, swing tickets and labels.

Community

Support us, as we continue to raise awareness about breast cancer and contribute to it's community. It's not a one day event, but every day of the year. We will make a donation to the Breast Cancer Network for every pink garment and heart print tunic sold. We've got you, You Got This CISTA!!!



Recycled Yarn

We are continually working with our fabric suppliers to reduce our impact on the environment. Recycled polyester is now used for Ezylin®, Pippa, 4-Way Stretch, City Stretch® Spot, Petal Print, Luxury Crepe Polyester, our new womens suiting and R Jeans.

With all of these fabrics, recycled polyester is made from recycling plastic bottles into chips. These are then transformed into polyester fibres. This process diverts unwanted plastic from landfill and gives this textile a second life.



Our certifications and supplier certifications include:



Global social compliance dedicated to promoting safe, lawful, humane and ethical manufacturing, ensuring safe labour practices and work environments.



Ethical trade membership organisation working with businesses to improve working conditions in global supply chains.



Tested for Harmful Substances Standard for customer confidence and high product safety, ensuring garments are tested for harmful substances.



International certification standard that considers the social impact of operations, encouraging commitment to social accountability and ethical standards.



100% recycled polyester yarn applied a technology that extracts and recycles useful ingredients from post-consumer PET bottles.



Wash & Wear, Easy Care Fabrics



Recycled Polyester



Anti-Bacterial Technology



CO-ORDINATES
with versatility

Our co-ordinating options work if you want that classic approach to your uniform, or mix and match them across our entire range.



Left to right:

- Pinfeather
4265 Long Sleeve with
MTRO-4060 Will trousers
- Pinfeather
2267 Short Sleeve
FPA41 992 Gracie slim leg pants
- Pinfeather
2264 Long Sleeve
FJ365 R Jeans

A man with short dark hair and a light beard is smiling at the camera. He is wearing a black, long-sleeved, button-down shirt. His hands are clasped in front of him, with his right hand pointing towards the left. He is wearing a ring on his left hand. The background is a plain, light grey color.

*Basic
black*

'The Black Shirt' - a Cotton Rich stretch shirt, a perfect uniform staple. Pairs with the R Jeans or suiting co-ordinates.



OLIVER

Mens 4773 Long Sleeve
65% Cotton, 30% Polyester, 5% Spandex
Sizes: S - 5XL, Slim Fit

OLIVIA

Womens 2773 Long Sleeve
65% Cotton, 30% Polyester, 5% Spandex
Sizes: 6 - 30, Semi-Fitted

BLACK



Perfect
basic

COTTON COMFORT

A soft hand feel makes this semi-fitted shirt an easy addition to anyone's uniform. Simple features such as non-transparent white fabric makes Cotton Comfort the perfect basic.



Womens FSH70 Long Sleeve
Polyester/Cotton
Sizes: 6 - 30, Semi-Fitted

Mens MSH80 Long Sleeve
Polyester/Cotton
Sizes: S - 5XL, Slim Fit

BLUE

WHITE

GREEN

PINK

CHAMBRAY

Chambray available upon request.



She can wear it too!



GINGHAM CITY CHECK

Made from 100% cotton, a stylish two toned gingham check with contrast trim on the inside collar and front placket. Slim fit style with a designer back yoke for the modern professional look that suits both corporate and casual.

Mens 4207 Long Sleeve
100% Cotton with Natural Stretch
Sizes: S - 5XL, Slim Fit





*Contrast
trim*

*100%
Cotton*



100%
Cotton

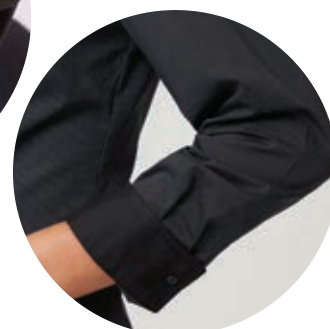
Natural stretch!



XPRESSO

A favourite choice for a trendy and modern uniform, made from 100% cotton fabric with natural stretch. Featuring the new 3/4 sleeve length in the women's style.

Contrast trims around neckline and cuffs



with Wonder Button



Mens

4257 Long Sleeve
100% Cotton with Natural Stretch
Sizes: S - 5XL, Slim Fit

Womens

2257 Long Sleeve
2258 3/4 Sleeve
100% Cotton with Natural Stretch
Sizes: 6 - 30, Semi-Fitted



PINFEATHER

Professional corporate favourite. Ladies style includes lycra for extra comfort, a princess line, three sleeve lengths, and a subtle colour palette of charcoal and blue. Co-ordinating mens style which is smart and professional and ranged in subtle tones.

*with
Wonder
Button*



*Available
in Short
Sleeve*



Womens: 2264 Long Sleeve, **2265** 3/4 Sleeve, **2267** Short Sleeve

57% Polyester, 38% Cotton, 5% Lycra
Sizes: 6 - 30, Semi-Fitted

Mens: 4265LS Long Sleeve, **4265SS** Short Sleeve

57% Polyester, 38% Cotton, 5% Lycra
Sizes: S - 5XL, City Fit

BLUE

CHARCOAL

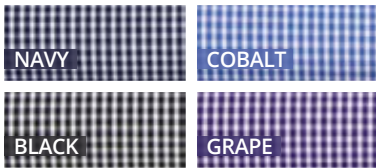




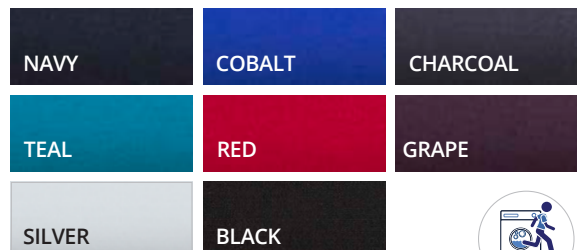
SO EZY

Co-ordinating styles to enhance your brand. The men's easy care, cotton-rich classic check in a slim fit reflects today's contemporary look. The women's style features a gathered action back in a soft lightweight fabric with roll up sleeves.

Mens: 4263 Long Sleeve
58% Cotton, 38% Polyester, 4% Spandex
Sizes: S - 5XL, Slim Fit



Womens: 2263 3/4 Sleeve with Roll-up Feature
Polyester with Natural Stretch. Sizes: 6 - 30, Action Fit





PIPPA CHECK

A stylish mini check in soft cotton-rich fabric. Contrast button stitching and a feature trim on the inside of the collar and cuffs. Women's style features the Wonder®Button to prevent gaping.



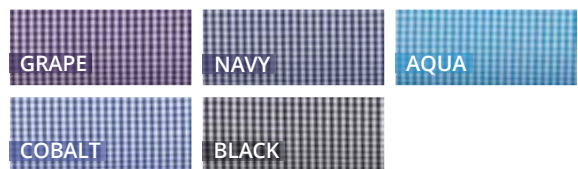
Button down collar

Mens 4222: Long Sleeve
60% Cotton, 40% Polyester. Sizes: S - 5XL, City Fit



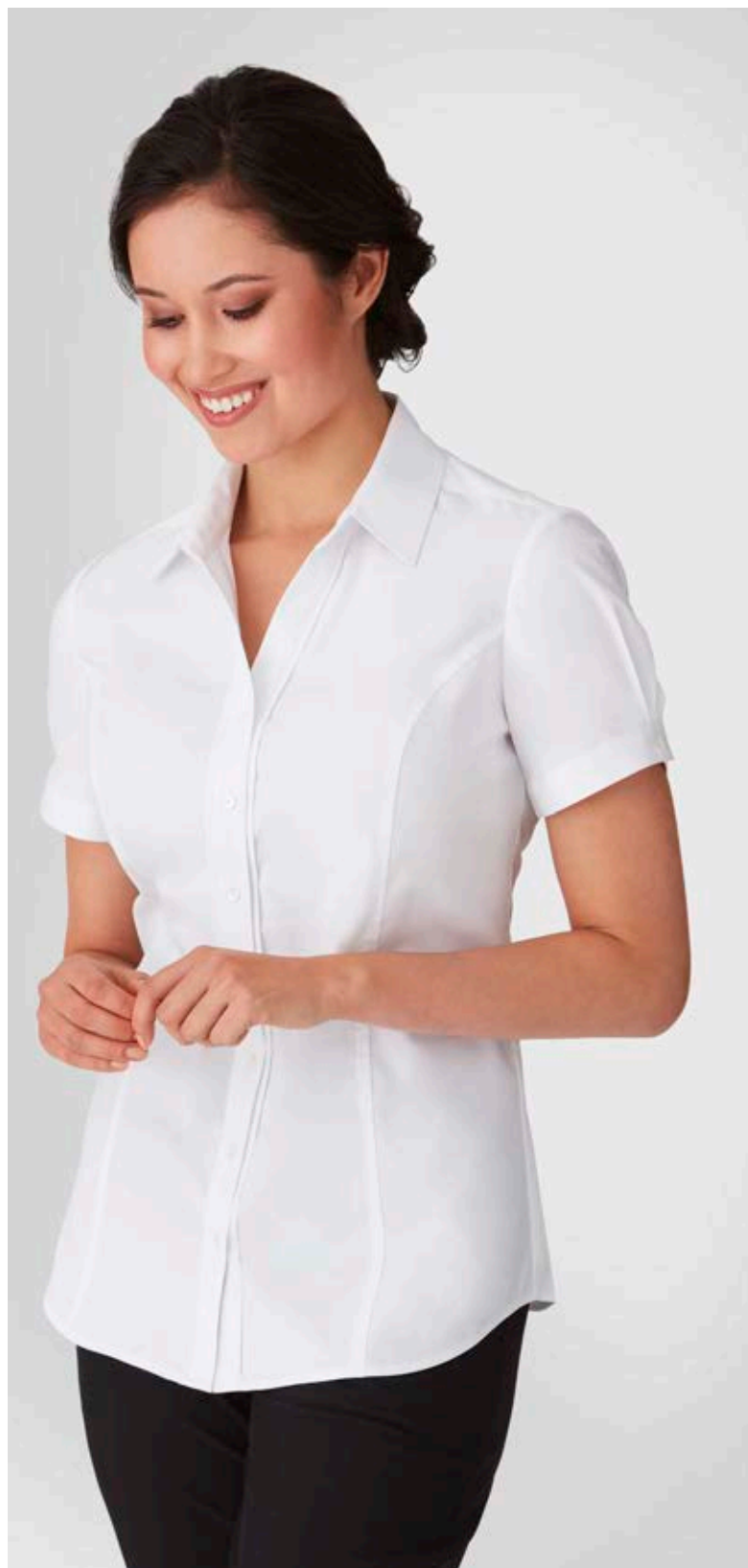
Fabric trim on inside collar and cuff

Womens 2444: 3/4 Sleeve
60% Cotton, 40% Polyester. Sizes: 6 - 26, Semi-Fitted



CITY STRETCH® CLASSIC

Styled in a premium, non-transparent fabric that features princess lines, enhancing the overall silhouette. Also features a longer length, detailed front placket and a choice of three sleeve lengths.



Womens 2260 Long Sleeve, **2261** 3/4 Sleeve,
2262 Short Sleeve
45% Cotton, 37% Polyester, 16% CEO, 2% Lycra
Sizes: 6 - 30, Semi-Fitted

WHITE

TWILL SHIRT

A cotton-rich premium Twill shirt that features a sophisticated contrast trim inside the collar and sleeve placket. An exceptionally easy care fabric, this beautifully tailored garment is a corporate 'must have' piece.



Contrast trims

Mens 4200 Long Sleeve
60% Cotton, 40% Polyester
Sizes S - 5XL, City Fit

WHITE





MICRO CHECK

A soft two-tone check, in an easy care cotton rich fabric. Designed for added comfort, the Micro Check is very durable making it a great utility shirt for the general work environment.

Womens: 2121 3/4 Sleeve
55% Cotton, 45% Polyester. Sizes: 6 - 30, Semi-Fitted

Mens: 4102LS Long Sleeve, **4102SS** Short Sleeve
55% Cotton, 45% Polyester. Sizes: S - 5XL, Full Cut





EZYLIN®

It feels like linen, is lightweight and non-iron/wrinkle-free. Ezylin® shirts are really versatile and perform in any work environment including hospitality.

Womens: 2145 3/4 Sleeve, **2146** Short Sleeve
Breathable Polyester/Recycled Polyester (except white).
Sizes: 6 - 30, Semi-Fitted

Mens: 4145 Short Sleeve
Recycled Breathable Polyester (except white). Sizes: S - 5XL, Sports Fit



Ezylin® styles can be requested and custom made in long sleeve. 12 colours available.



TOPS & SHIRTS
LOOK GOOD
feel great





Designs people want to wear, made from innovative fabrics and premium manufacturing. Our tops and shirts are of superior quality that meet the demands of today's work environments.

Left: 2211 Long Sleeve
Right: MSH80 Long Sleeve



PIPPA KNIT

Exceptionally soft and cool to wear, the Pippa Knit has a unique and versatile draped neckline with gathered front details. It creates a feminine look that is flattering to everyone.



2221 3/4 Sleeve, **2222** Short Sleeve
 Polyester Matte Jersey
 Sizes: XXS - 4X. Semi-Fitted

DARK LILAC	WHITE	BLACK
KELLY GREEN	AQUA	RED
COBALT	NAVY	JADE
GRAPE	CHARCOAL	





*Dress up
or down*

CITY OVERKNIT

The cardigan is a versatile essential knit that complements all other styles in our collection. Made from Australian Merino Wool blend in a low-pill yarn.

*Low-pill
yarn*



2225 Long Sleeve
50% Australian
Merino Wool,
50% Acrylic
Sizes: XXS - 4X,
Semi-Fitted

NAVY

BLACK

Also featured:
2147 Long Sleeve
Ezylin®
Sizes: 6-30, Action Fit



PETAL PRINT

Upgrade your uniform with this luxurious recycled jersey knit top. This timeless petal print is available in three colour options. A versatile style suitable for healthcare or corporate. Wash & Wear, Easy Care.

Easy to wear



2277 Short Sleeve
Recycled Polyester/
Polyester, 5% Spandex
Sizes: XXS - 5X, Semi-Fitted

NAVY/WHITE

NAVY/BLUE

BLACK/WHITE

GRACE

Elegant and graceful, featuring cross-over sides, stitched in centre front pleat, and a slinky inner knit. Designed for amazing comfort.



2287 Short Sleeve
Outer - Polyester Luxury Crepe
Inner Knit - Polyester/Spandex
Sizes: 6 - 26, Semi-Fitted



PEWTER

NAVY

ROYAL

BLACK



*Longer line
design*

ELLA

A smart polo when you are not wearing a polo! Essential everyday classic that suits any industry, co-ordinating well for a corporate or casual look. Made from our popular matte jersey, this style features an open collar and detailed placket.

Like a polo



*Casual
comfort*

2273 3/4 Sleeve,
2274 Short Sleeve
Polyester Matte Jersey
Sizes: XXS - 4X, Semi-Fitted



NAVY

ROYAL

BLACK

CHARCOAL

BELLA

This style is elegant, smart and timeless, with a contrast detailed placket. A versatile option for any industry.



2275 3/4 Sleeve
2276 Short Sleeve
Polyester Matte Jersey
Sizes: XXS - 4X, Semi-Fitted





*Soft
drape*

MEGHAN

Simple and relaxed in a luxury crepe fabric with a beautifully shaped hemline and inverted action back for movement. Features a concealed button placket and is further enhanced by a ¾ sleeve roll up option.



2211 Long Sleeve
Recycled Polyester Luxury Crepe
Sizes: 6 - 26, Action Fit

ROYAL

NAVY

BLACK

*Non-transparent
white fabric*



EZYLIN® MEGHAN

We've taken the Meghan relaxed fit design and made it with our white Ezylin® fabrication – so it's soft, elegant and non-transparent. The sleeves can be rolled-up to become a ¾ option.



*New maternity
style*

2147 Long Sleeve,
Breathable Polyester
Sizes: 6 - 30, Action Fit

2148 Maternity Long Sleeve
Breathable Polyester
Sizes: S - 1X, Action Fit

WHITE





*Ideal for
day or night*

SOPHIA

Redefined sophistication with natural stretch, featuring a 3/4 sleeve with a roll-up option. Sophia features front pintuck details for a flattering line. Made from So Ezy fabric, it is lightweight and easy to care for.



*Front pintuck
matches the
City Stretch® Spot*



2215 3/4 Sleeve
So Ezy Polyester
with Natural Stretch
Sizes: 6 - 30, Semi-Fitted

RED	BLACK
COBALT	NAVY

Luxury crepe



MARILYN

Marilyn meets the demands of the working professional offering the versatility of desk to dinner. Made in our luxury recycled crepe, featuring a gathered sleeve and detailed neckline.

2271 3/4 Sleeve
Recycled Polyester Luxury Crepe
Sizes:-6 - 26, Action Fit



BLACK

KELLY GREEN

TANGERINE

NAVY



Cool to wear

ENVY

Elegant, relaxed fit shirt with pleated front concealed buttons and action back capturing today's corporate trends. Cool to wear and ideal for busy professionals.



2288 Short Sleeve
Recycled Polyester Luxury Crepe Sizes: 6 - 26, Semi-Fitted

ROYAL	NAVY	BLACK
TANGERINE	KELLY GREEN	



*Relaxed
fit*

KEYHOLE KNIT

Enhanced by the elegant keyhole and pleat neckline, this top is made in a luxurious textured crepe that feels so silky against your skin.

*Fabric that
moves with you*



2295 Short Sleeve
95% Polyester, 5% Spandex
Sizes: XXS - 4X, Semi-Fitted

TEAL	ROYAL
BLACK	NAVY

KNIT WOVEN

A unique combination of flattering woven So Ezy front with v-neckline detail and a knit back for ultimate comfort and versatile movement.



2299 Short Sleeve
Front - So Ezy Polyester
Back - 94% Polyester, 6% Elastane
Sizes: 6 - 26, Semi-Fitted

RED	ROYAL
NAVY	CHARCOAL
BLACK	

*Available in
3 sleeve lengths*

*Trans-
seasonal*



SMART KNIT

Practical everyday classic. An essential, trans-seasonal versatile knit featuring a smart scooped neckline and three sleeve options.



2290 3/4 Sleeve, **2291** Short Sleeve, **2292** Sleeveless
Polyester Matte Jersey. Sizes: XXS - 4X, Semi-Fitted

NAVY

ROYAL

CHILLI

SILVER

BLACK

EVA KNIT

This elegant and versatile style features a timeless cowl neck that doesn't gape. This soft but durable knit is designed to shape and flatter your figure.



2226 3/4 Sleeve, **2227** Short Sleeve, Polyester Matte Jersey
Sizes: XXS - 4X, Semi-Fitted



CASCADE

Cleverly combining a silky inner knit cami and woven fabric to bring ultimate comfort and fit. Complemented by a smart cascading vertical pleat in a soft round neckline.

A soft touch



2285 Short Sleeve Outer (woven) Polyester - Inner (knit) 95% Polyester, 5% Spandex. Sizes: 6 - 26, Semi-Fitted



SILVER

BLACK

COBALT

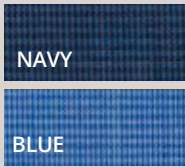
RED

AQUA

Inner lining is a stretch knit

MICRO CHECK

4102LS Long Sleeve
4102SS Short Sleeve
55% Cotton, 45% Polyester
Sizes: S - 5XL, Full Cut



From management to healthcare to hospitality, our mens' shirts are versatile across all industries.



100%
Cotton

CAPRI CHECK

4111 Long Sleeve
100% Superfine Cotton
Sizes: 38 - 52, Tailored Fit



SHADOW CHECK

4182 Long Sleeve
55% Cotton, 45% Polyester
Sizes: S - 5XL, Slim Fit



Offering a range of smart, premium quality corporate casual shirts.



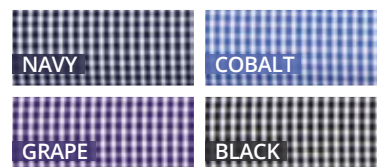
GINGHAM CITY CHECK

Mens 4207 Long Sleeve
100% Cotton with Natural Stretch
Sizes: S - 5XL, Slim Fit



SO EZY CHECK

4263 Long Sleeve
58% Cotton, 38% Polyester, 4% Spandex
Sizes: S - 5XL, Slim Fit

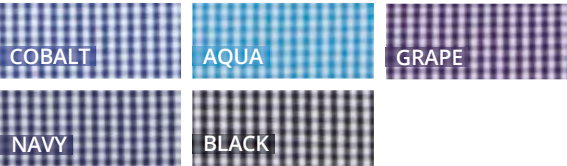


We understand that your uniform needs to withstand the rigours of daily wear, which is why we use only high-quality materials. Our shirts are made to last and maintain form ensuring your team always looks their best.



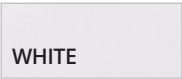
PIPPA CHECK

4222 Long Sleeve
60% Cotton, 40% Polyester
Sizes: S - 5XL, City Fit



TWILL SHIRT

4200 Long Sleeve
60% Cotton, 40% Polyester
Sizes S - 5XL, City Fit





DENIM SHIRT

4774 Long sleeve
65% Lyocell, 35% Cotton
(Soft Denim)
Sizes: S - 5XL, Sports Fit
Colour: Denim

Shirts that integrate seamlessly with any uniform range.



XPRESSO

4257 Long Sleeve.
100% Cotton with Natural Stretch Sizes: S - 5XL, Slim Fit



PINFEATHER

Mens: 4265LS Long Sleeve, **4265SS** Short Sleeve
57% Polyester, 38% Cotton, 5% Lycra. Sizes: S - 5XL, City Fit



Different businesses have different requirements. We understand.



OLIVER

4773 Long Sleeve. 65% Cotton, 30% Polyester, 5% Spandex. Sizes: S - 5XL, Slim Fit

BLACK

COTTON COMFORT

MSH80 Long Sleeve. Polyester/Cotton
Sizes: S - 5XL, Slim Fit

BLUE

WHITE

GREEN

PINK

CHAMBRAY

Chambray available upon request.

A mix of smart, casual and tailored shirts for men in premium fabrics. Our shirt range offers colours, stripes, and checks – styles that can be worn to mix and match and co-ordinate back with womens, for a uniform in any work environment.



EZYLIN®

4145 Short Sleeve. Recycled Breathable Polyester (except white). Sizes: S - 5XL, Sports Fit

DENIM	ROYAL	BLUE
CHARCOAL	TEAL	BLACK
WHITE		

CITY ACTIVE TOP

CA4T Short Sleeve. Recycled Polyester, 5% Spandex Anti-Bacterial. Sizes: XXS - 5X, Sports Fit

TEAL	BLACK	ROYAL
NAVY	CHARCOAL	



SUITING SEPARATES

*for comfort
& style*

Create a stylish corporate look by co-ordinating suiting separates with our shirts and tops, that will take you through the working week. A smart business investment.

Left: 4207 Long Sleeve, **MJK-751** Jacket, **MPA-651** Pants
Right: 2290 Long Sleeve, **FJK-361** Jacket, **FPA-561** Pants



Smart & comfortable

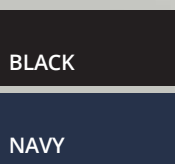
The most comfortable A-line dress with a front pouch pocket, stunning design lines and made from our soft twill miracle fabric with stretch that is so easy to wash and wear.

Riley

FDR461

Polyester/Recycled Polyester

Sizes: 6 - 30



*New
Recycled
Fabric*

Complete your look with the versatile longer line, single breasted Tilley jacket. Featuring unlined construction, front flap pockets, and stretch twill fabric. This looks fabulous paired with your dress, skirt or pant.

*New
Recycled
Fabric*

Tilley

FJK361

Polyester/Recycled Polyester
Sizes: 6 - 30



BLACK

NAVY



Flattering style & fit

We've re-imagined the classic straight leg pant and A-line skirt but added more flattering lines, a wider waistband and angled pockets.



New Recycled Fabric

Jessie

Left: FPA561
Polyester/Recycled Polyester
Sizes: 6 - 30



BLACK

NAVY



Remy

FSK261
Polyester/Recycled Polyester
Sizes: 6 - 30

*New
Recycled
Fabric*



BLACK

NAVY



Back profile

*Mix & match
with any shirt or top from
your City Collection!*



City Collection throws out the rulebook with its all-new, mix-and-match unstructured suiting collection! Designed for the modern professional who craves both comfort and endless outfit possibilities, this range lets you express your unique style with ease.





Functional Bomber

This zip front jacket features a soft quilted lining keeping you warm, plus secure double pockets with inner zip.



LONDON

MJK751
Sorbtek® Polyester
Sizes: S - 5XL
Black & Navy



BLACK

NAVY

Sleek Slim-Fit Pants

Fabricated in natural stretch that's breathable, quick drying and stain resistant. Features 6 pockets, two with zippers.



MORGAN

MPA-651

Sorbtek® Polyester. Sizes: 77R-117R. Black & Navy

BLACK

NAVY



Fully lined jacket

Whether you're in the office or out on the town, the Dianna jacket is available in two fabrics and is tailored for a perfect fit.



Dianna

FJK35-992

Sorbtek®
Polyester
Sizes: 6 - 26
Colours: Black
& Navy

FJK35-4060

60% Polyester,
40% Wool
Sizes: 6 - 26
Colours: Black,
Navy & Charcoal

Samantha

FPA22-992

Classic pants
flexi waist
Sorbtek® Polyester
Sizes: 6 - 26
Colours: Black
& Navy

FPA22-4060

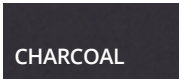
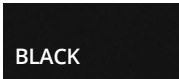
Ladies flexi waist
Classic pants
60% Polyester,
40% Wool
Sizes 6 - 26
Colours: Black,
Navy & Charcoal



So Ezy Pant

CA3P

Straight leg, pull-on
pants with angled side
pockets Recycled
Polyester, 5% Spandex
Anti-bacterial
Active fit
Sizes: XXS - 3X
Black, Navy & Charcoal



Miranda

FPA40-992

Pants with exposed
elastic back waist
Sorbtek® Polyester
Sizes: 6 - 26
Colours: Black,
Navy



Gracie

FPA41-992

Slim leg pants
Sorbtek® Polyester
Sizes: 6 - 24
Black & Navy

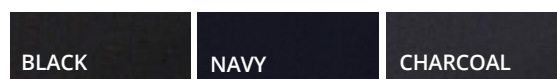
FPA41-4060

Slim leg pants
60% Polyester,
40% Wool
Sizes: 6 - 24
Colours: Black,
Navy & Charcoal

Available colours for
Sorbtek® Polyester



Available colours for
60% Polyester, 40% Wool



Classic silhouette

Our corporate skirt is designed with functional pockets and action back split, wear it with any of our shirts or tops.



2277 Petal Print Short Sleeve
Recycled Polyester/Polyester,
5% Spandex
Sizes: XXS - 5X, Semi-Fitted
Colours: Black/White,
Navy/White and Navy/Blue



FSK45-992 Maddi Skirt
Knee length skirt
Sorbtek® Polyester
Sizes 6 - 26
Colours: Black & Navy



Shorter options to suit warmer climates and designed to meet the diverse needs of hospitality, health or in the instance of the skirt varied industries.



Natasha

FPA38-992
Flexi waist short
Sorbtek® Polyester
Sizes: 6 - 26
Black & Navy

Maddi

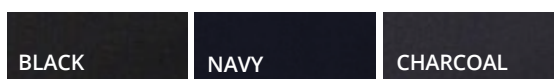
FSK45-992
Knee length
front pocket skirt
Sorbtek® Polyester
Sizes: 6 - 26
Black & Navy

FSK45-4060
60% Polyester, 40% Wool
Ladies knee length
front pocket skirt
Sizes: 6-26
Black, Navy & Charcoal

Available colours for
Sorbtek® Polyester



Available colours for
60% Polyester, 40% Wool





Charles

MSC2-4060
2-Button Jacket
60% Polyester, 40% Wool
Sizes: 82R - 132R
Black, Navy & Charcoal



Will

MTRO-4060
Flexi Waist Trousers
60% Polyester, 40% Wool
Sizes: 77R - 107R, 87S - 132S
Black, Navy & Charcoal

BLACK

CHARCOAL

NAVY

A classic fit

Stylish, internal flexi-waist, flat front pants, with functional pockets and adjustable centre back seam.



Will

MTRO-4060

Flexi Waist Trousers. 60% Polyester, 40% Wool
 Sizes: 77R - 107R, 87S - 132S. Black, Navy & Charcoal



- BLACK
- NAVY
- CHARCOAL

Harry

MTRO-690

Flexi Waist Trousers. 80% Polyester, 20% Viscose
 Sizes: 77R - 107R, 87S - 132S. Black & Navy



- BLACK
- NAVY

REGULAR LENGTH

Waist/in	30	32	34	36	38	40	42
Waist/cm	77	82	87	92	97	102	107

STOUT LENGTH

Waist/in	34	36	38	40	42	44	46	48	50	52
Waist/cm	87	92	97	102	107	112	117	122	127	132



FOR ALLIED HEALTH TEAMS

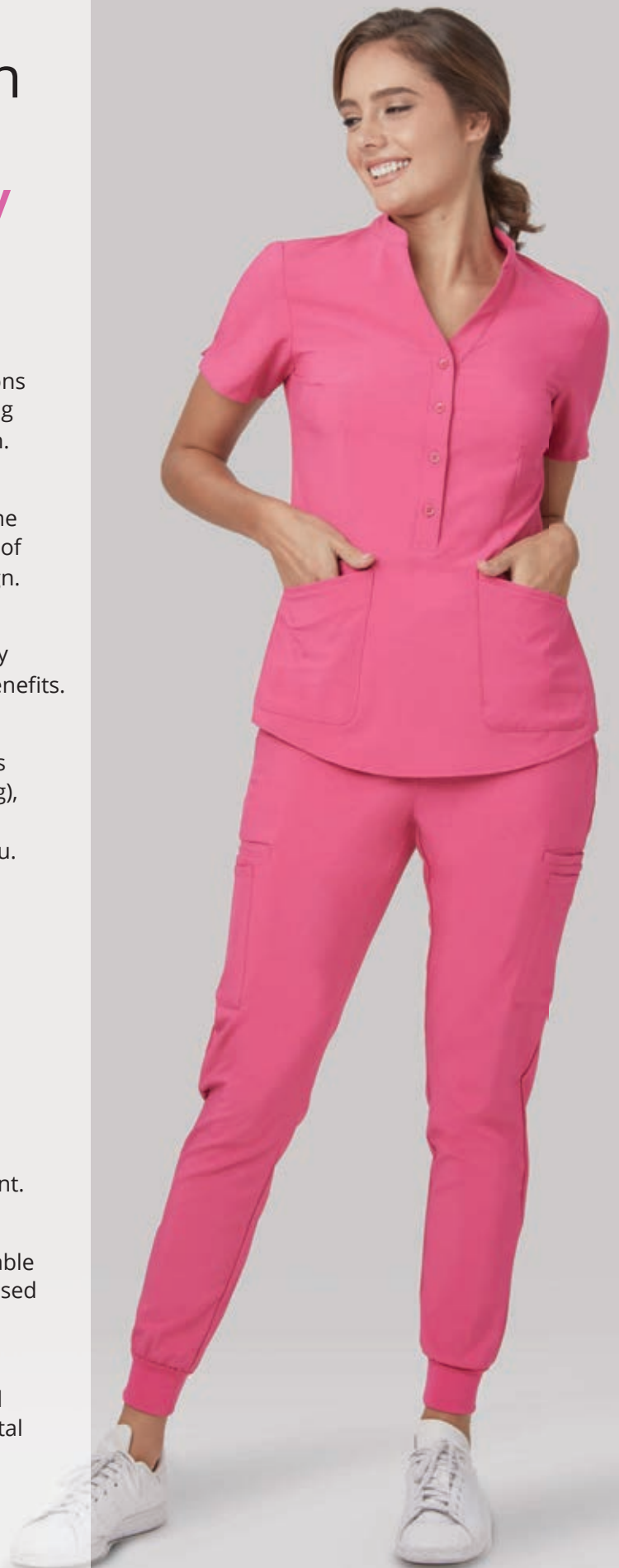
*easy care
& easy wear*

Offering the most popular colour palettes that complement most brand identities and offer a large range of co-ordinate styles and fabrics for added diversity.

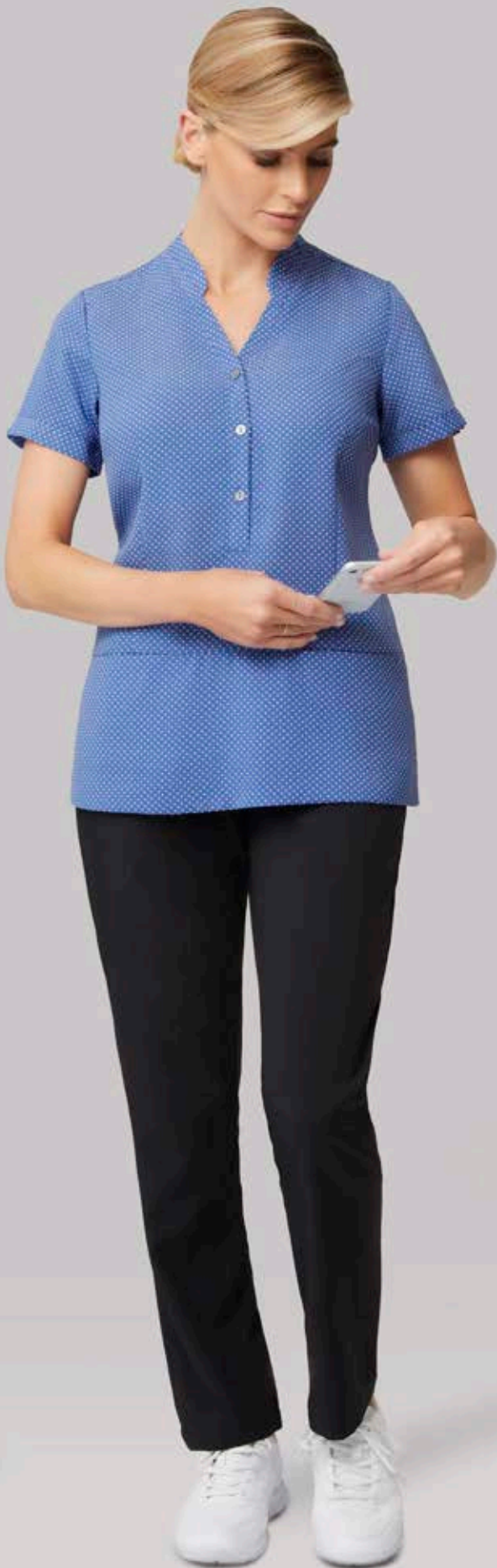


The City Collection healthcare range targets 8 industry requirements:

- ✓ **Function and Recognition**
Garments reflect the roles and functions of staff and each style projects a strong sense of identification and recognition.
- ✓ **A Colour Story**
Promote a unified team look within one colour palette whilst enjoying a sense of individuality within the style and design.
- ✓ **Easy Care & Breathable Fabrics**
Garments that are easy to wear & easy to care for, most with anti-bacterial benefits.
- ✓ **Comfort & Practicality**
With the physical nature of many roles (bending, lifting, reaching, and twisting), fabrics, styles and sizes must create comfortable attire that moves with you.
- ✓ **Durability & Presentation**
Hard-wearing fabrics with long lasting quality to ensure that garments have longevity and maintain a professional appearance all day, everyday.
- ✓ **A Range of Designs and Sizes**
From the design, style and cut of the shirts, consideration has been made for your body width and height to accommodate your range of movement.
- ✓ **Quick Delivery**
With every style, size and colour available on stock service, every order is processed and delivered promptly.
- ✓ **Sustainability**
Recycled fabrics produced with ethical production practices and environmental sustainability benefits.



2284 Zip Back Tunic with CA7P Jogger



2174 City Stretch® Spot Tunic with **CA3P** So Ezy Pant



CA4T City Active Top with **CA4P** City Active Pant



Say it with prints

Strong patterns enhance staff identification and sense of unity. A strong pattern helps clients identify your team quickly.





Drift Print

2192: Short Sleeve
Recycled Polyester, 5% Spandex Anti-Bacterial.
Sizes: 6 - 30, Action Fit. Colours: Teal, Blue & Navy



City Stretch® Spot

2172 3/4 Sleeve, **2173** Short Sleeve
Recycled Polyester/Polyester with Natural Stretch
Sizes: 6 - 30, Semi-Fitted



Heart Print Tunic

2281 Short Sleeve
Recycled Polyester, 5% Spandex Anti-Bacterial.
Sizes: 4 - 30, Semi-Fitted. Colours: Blue, Navy & Teal



Petal Print

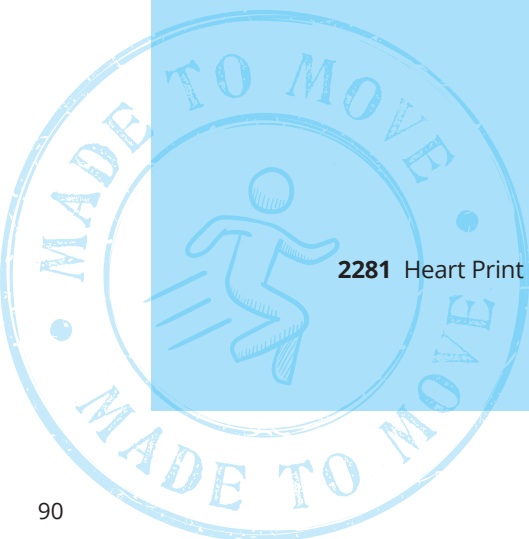
2277 Short Sleeve
Recycled Polyester/Polyester, 5% Spandex. Sizes: XXS - 5X
Semi-Fitted. Colours: Navy/Blue, Navy/White & Black/White

Recycled

4-Way Stretch Range

Breathable fabric made from Recycled Polyester and 5% Spandex with cool touch and anti-bacterial 4-Way Stretch.

- ✓ 4-way stretch that moves with you
- ✓ Non iron, so it's always ready to wear
- ✓ Quick drying, making it perfect for everyday wear
- ✓ Light & durable, comfortable and long lasting
- ✓ Cool to wear, made with breathable, anti-bacterial fabric, ideal for the active role



2281 Heart Print Tunic





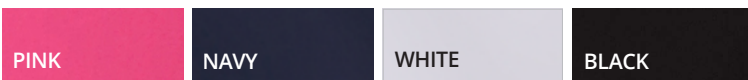


Zip Back Tunic

Multiple pockets and loops for extra function plus a convenient zip-back pocket.



2284 Short Sleeve. Recycled Polyester, 5% Spandex Anti-Bacterial. Sizes: 6 - 26, Semi-Fitted



*Side
pockets*

Chrissy

Chrissy is soft, cool to wear and incredibly versatile. A unique design featuring side pockets.



2283 Drop Shoulder Sleeve. Recycled Polyester, 5% Spandex Anti-Bacterial. Sizes: XXS - 4X, Action Fit



A woman with long, dark, curly hair is smiling and looking towards the camera. She is wearing a dark blue, short-sleeved, V-neck tunic with subtle piping and a name tag that reads "SHEA TUNIC". She is holding a black clipboard in her left hand. The background is a plain, light-colored wall.

4-Way Stretch Tunic

Contrast subtle piped tunic, with a modest neckline multiple pockets, airflow action back and generous side splits.



2280 Short Sleeve. Recycled Polyester, 5% Spandex Anti-Bacterial. Sizes: 4 - 30, Semi-Fitted

- | | | | | |
|------|-------|------|-------|----------|
| NAVY | ROYAL | TEAL | BLACK | CHARCOAL |
|------|-------|------|-------|----------|

Available in a maternity option!

City Active 2 Top

An active scrub in a 4-Way Stretch easy care fabric, with anti-bacterial protection and multi functional pockets.

*Knit stretch
side panels*

Style Details

- ✓ 2 Pockets, left side
- ✓ 3 Pockets, right side
- ✓ Knit stretch side panels
- ✓ Contrast or plain colour option
- ✓ Hem split

*2 pockets
left side*



*3 pockets
right side*



*Shaped
Hem*



CA2T: Top

Body: 95% Polyester, 5% Spandex

Side Panel: Polyester

Sizes: XXS - 3X, Semi-Fitted

ROYAL/NAVY

NAVY/NAVY

CA2P: Pants

Pants: 95% Polyester, 5% Spandex

Inner Pocket: Polyester

Sizes: XXS - 5X, Semi-Fitted

NAVY



10 Pocket Jogger

Made from Recycled Polyester, this lightweight Jogger is supremely functional with ten pockets and with fabric that moves with you.



CA7P Jogger
Recycled Polyester, 5% Spandex, Anti-Bacterial
Sizes: XXS - 3X, Active Fit



2 x hidden zip pocket (left & right)

2 x deep pockets (left & right)

2 x welt pockets (left & right)

2 x deep side pockets (left & right)

Yoga inspired waistband
360° drawstring

Tapered cut

2 back pockets

Stretch cuff

City Active 2 Pants

Functional all-purpose scrub bottoms. Featuring an elastic waist with drawstring and multiple pockets that are functional.



CA2P
Pants - Recycled Polyester, 5% Spandex Anti-Bacterial
Inner Pocket - Polyester Anti-Bacterial.
Sizes: XXS - 5X , Semi-Fitted



So Ezy Pants

Made to move with you, the pull-on So Ezy pants is extremely comfortable, quick drying and breathable. Soft yoga inspired waistband.



CA3P
Recycled Polyester, 5% Spandex Anti-Bacterial
Sizes: XXS - 3X, Active Fit





City Active Top

Featuring a tailored collar,
2 button placket, side splits
and a zipper chest pocket.



CA4T Short Sleeve. Recycled Polyester, 5% Spandex Anti-Bacterial. Sizes: XXS - 5XL, Sports Fit



City Active Pants

The City Active is a unisex scrub pants made with anti-bacterial protection and features multiple pockets, a full internal drawstring waistband and key loops making these pants so functional to wear.



CA4P City Active Pants
95% Recycled Polyester/Polyester,
5% Spandex, Anti-Bacterial
Sizes: XXS - 5XL, Active Fit

CHARCOAL

TEAL

NAVY

BLACK

Full elastic waist
360° drawstring

Angled front
pockets
(right & left)

Side leg pockets
(right side)

Deep
side pocket



Key loop
(left side)





Pharmacy/ Dental Top

With special touches such as snap ring fasteners and pockets, this top is the perfect choice.



Mens: CA44T Short Sleeve
 Recycled Polyester,
 5% Spandex Anti-Bacterial
 Sizes: S - 2XL, Tailored Fit

Features

- Band collar
- Top and lower pocket
- Snap ring fasteners

WHITE

Womens: CA22T Short Sleeve
 Recycled Polyester,
 5% Spandex Anti-Bacterial
 Sizes: 6 - 22, Semi-Fitted

Features

- Mandarin collar
- Double front pockets
- Snap ring fasteners

WHITE

BLACK



Womens front pockets



Mens top pocket

Ezylin® *in* Recycled Polyester

Ezylin® is a soft yet durable fabric that is machine washable for everyday wear. It features an easy care finish with minimal or no ironing required. Ezylin® styles are part of the co-ordinate range.

- ✓ The perfect fabric for all work environments
- ✓ A unique finish that keeps you cool, dry and comfortable
- ✓ 100% Breathable fabric made from recycled polyester
- ✓ Co-ordinates perfectly within our range
- ✓ Designed to fit most body shapes and sizes

2151 Ezylin® Tunic





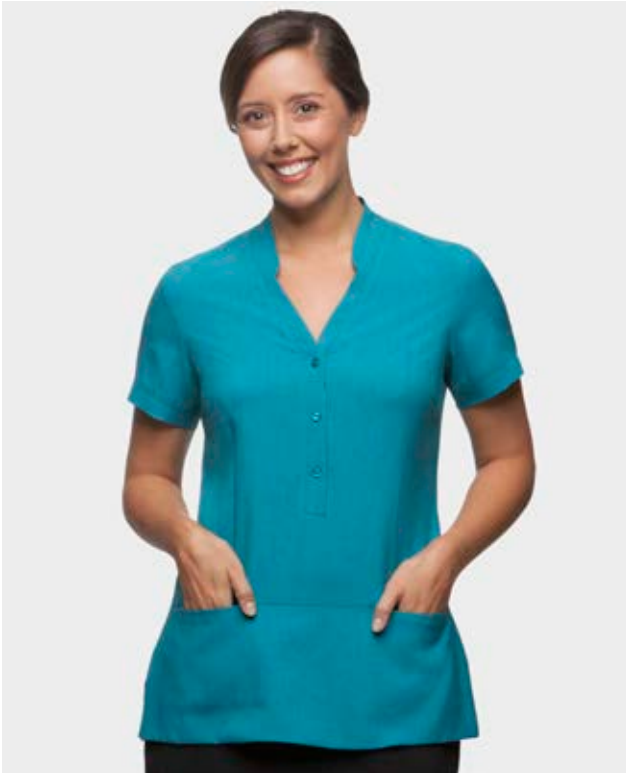
Ezylin® classic style shirts and tunics can be ordered and custom made in any of the 12 colours available!



2145 3/4 Sleeve, **2146** Short Sleeve. Breathable Polyester/Recycled Polyester
Sizes: 6 - 30, Semi-Fitted.

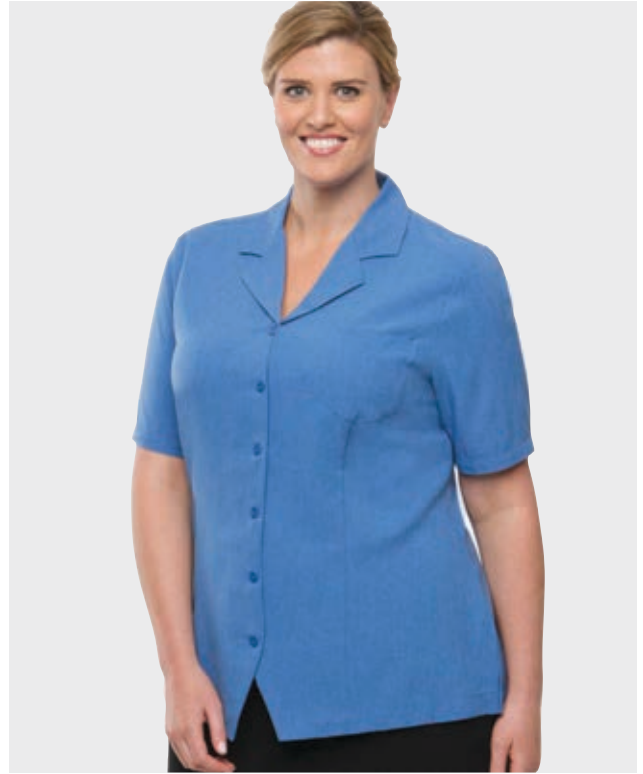
KELLY GREEN	TEAL	OCEAN	CHARCOAL	LILAC	BLACK
DENIM	ROYAL	BLUE	CHILLI	WHITE	RED

Ezylin® styles can requested and custom made in any of the 12 colours available.



Ezylin® Tunic

2151 Short Sleeve
Breathable Polyester/Recycled Polyester
Sizes: 6 - 30, Action Fit. Royal & Teal



Ezylin® Tunic Overblouse

2149 Short Sleeve
Breathable Polyester/Recycled Polyester. Sizes: 6 - 30
Action Fit. Royal, Ocean, Teal & Red



Ezylin®

4145 Short Sleeve. Breathable Polyester/
Recycled Polyester. Sizes: S - 5XL, Sports Fit
Charcoal, Denim, Royal, Blue, Teal,
Black & White



Ezylin® Dual Pocket Stripe

2270 Short Sleeve
100% Breathable Polyester
Sizes: 6 - 30. Action Fit. Blue



Wash & Wear City Stretch® Spot

City Stretch® is a comfortable fabric that moves with you, is cool and light making it the perfect fit for everyday wear.

- ✓ Recycled polyester
- ✓ Natural stretch
- ✓ Non iron, quick drying
- ✓ Durable
- ✓ Light & breathable
- ✓ Wash & wear, easy care

2174 City Stretch® Spot Tunic





For that modern professional look, this Recycled Polyester fabric with natural stretch, offers plenty of movement and comfort.



Side splits



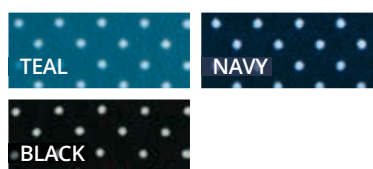
City Stretch® Spot Tunic

2174 Short Sleeve
Recycled Polyester/Polyester with Natural Stretch
Sizes: 6 - 30, Action Fit



City Stretch® Spot Hi-Lo

2175 3/4 Sleeve
Recycled Polyester/ Polyester with Natural Stretch
Sizes: 6 - 30, Action Fit



*with
Wonder
Button*



City Stretch® Spot

Left: 2173 Short Sleeve **Right: 2172** 3/4 Sleeve
Recycled Polyester/Polyester with Natural Stretch
Sizes: 6 - 30, Semi-Fitted



City Health Active *with Hi-Tec Silver*

Hi-Tec Silver Technology is a unique anti-microbial and quick drying yarn that contains elements that can move moisture away from your body to the outer layer of fabric. As a result the fabric not only inhibits germs but feels really soft and fresh all the time.

- ✓ Quick absorption & drying
- ✓ Little to no ironing required
- ✓ Anti-bacterial protection, kills germs
- ✓ UV protection
- ✓ Durable
- ✓ Removes odour, superior freshness

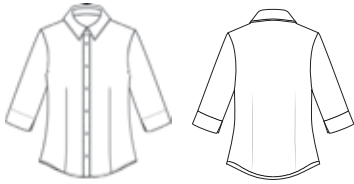
2230: Short Sleeve
Polyester Hi-Tec Silver · Sizes: XXS - 5X, Semi-Fitted
Colours: Teal, Navy, Royal & Lilac





MICRO CHECK

Womens: 2121 3/4 Sleeve
55% Cotton, 45% Polyester (Easy care). Sizes: 6 - 30



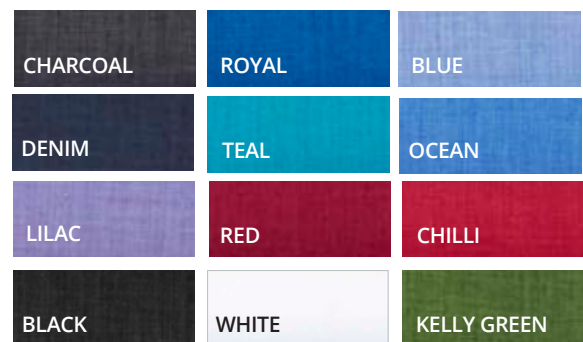
Mens: 4102LS Long Sleeve, **4102SS** Short Sleeve
55% Cotton, 45% Polyester (Easy care). Sizes: S - 5XL



EZYLIN®



Womens: 2145 3/4 Sleeve, **2146** Short Sleeve
Recycled Breathable Polyester. Sizes: 6 - 30

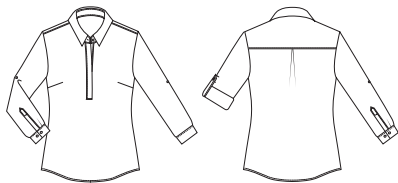


(All colours are Recycled Polyester except white.)

EZYLIN® MEGHAN



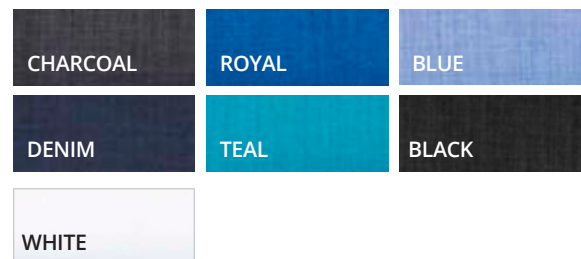
Womens: 2147 Long Sleeve
Breathable Polyester. Sizes: 6 - 30



EZYLIN®



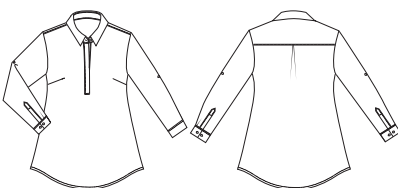
Mens: 4145 Short Sleeve
Recycled Breathable Polyester. Sizes: S - 5XL



EZYLIN® MATERNITY TOP



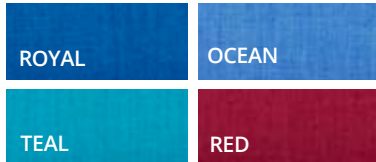
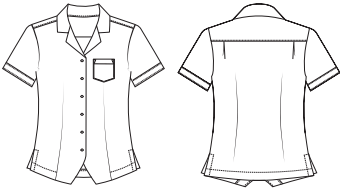
Womens: 2148 Maternity Long Sleeve
Breathable Polyester. Sizes: S - 1X



EZYLIN® OVERBLOUSE



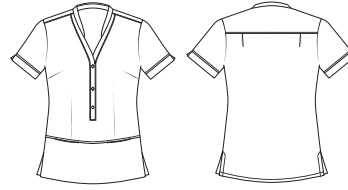
Womens: 2149 Short Sleeve
Recycled Breathable Polyester. Sizes: 6 - 30



EZYLIN® TUNIC



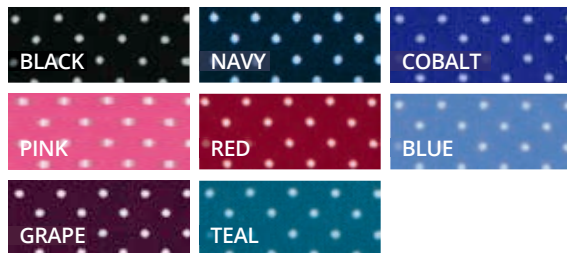
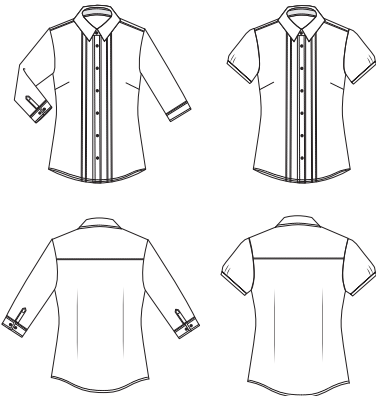
Womens: 2151 Short Sleeve
Recycled Breathable Polyester. Sizes: 6 - 30



CITY STRETCH® SPOT



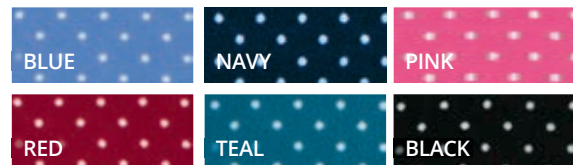
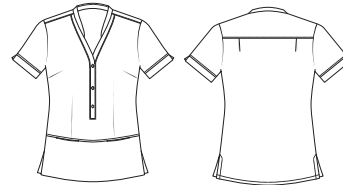
Womens: 2172 3/4 Sleeve, **2173** Short Sleeve
Recycled Polyester / Polyester with Natural Stretch
Sizes: 6 - 30



CITY STRETCH® SPOT TUNIC



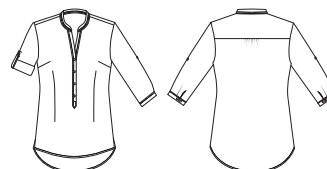
Womens: 2174 Short Sleeve
Recycled Polyester / Polyester with Natural Stretch
Sizes: 6 - 30



CITY STRETCH® SPOT HI-LO



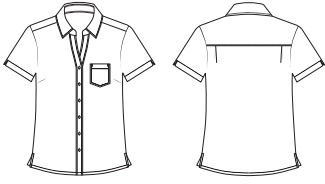
Womens: 2175 3/4 Sleeve
Recycled Polyester / Polyester with Natural Stretch
Sizes: 6 - 30



DRIFT PRINT



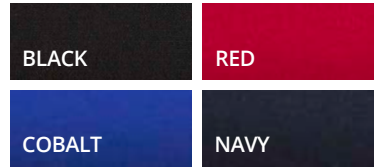
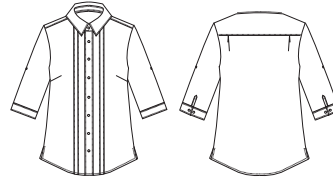
Womens: 2192 Short Sleeve
Recycled Polyester, 5% Spandex, Anti-Bacterial
Sizes: 6 - 30



SOPHIA



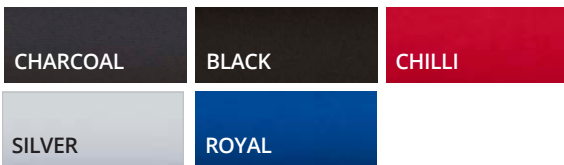
Womens: 2215 3/4 Sleeve
So Ezy Polyester with Natural Stretch. Sizes: 6 - 30



EVA KNIT



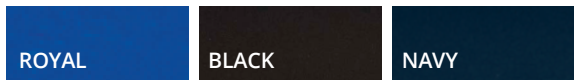
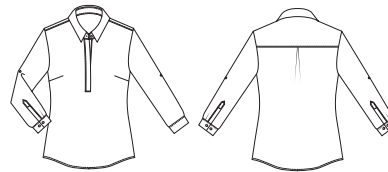
Womens: 2226 3/4 Sleeve, **2227** Short Sleeve
Polyester Matte Jersey. Sizes: XXS - 4X



MEGHAN



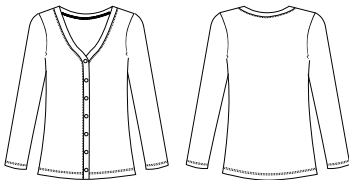
Womens: 2211 Long Sleeve
Recycled Polyester Luxury Crepe. Sizes: 6 - 26



CITY OVERKNIT



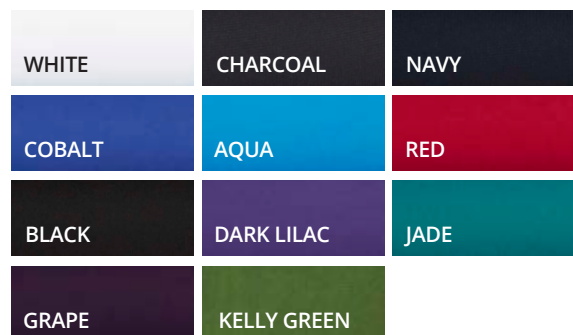
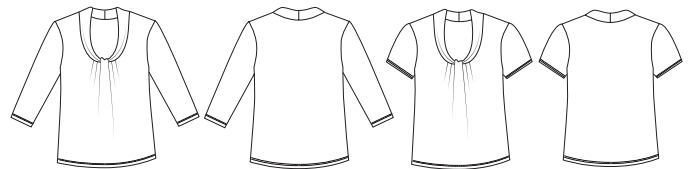
Womens: 2225 Long Sleeve
50% Australian Merino Wool, 50% Acrylic. Sizes: XXS - 4X



PIPPA KNIT



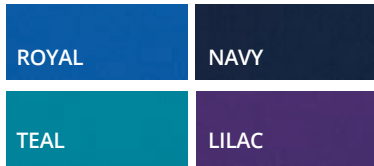
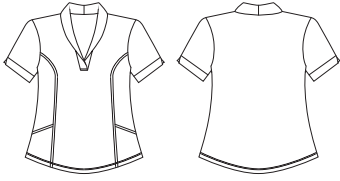
Womens: 2221 3/4 Sleeve, **2222** Short Sleeve
Polyester Matte Jersey. Sizes: XXS - 4X



CITY HEALTH ACTIVE

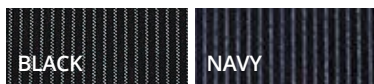
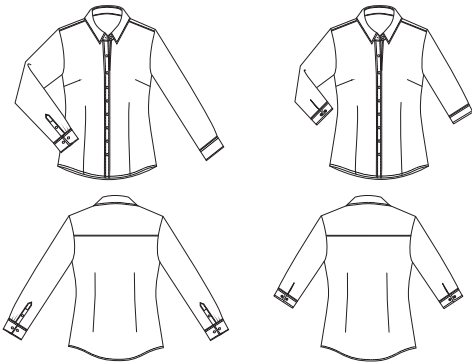


Womens: 2230 Short Sleeve
Polyester, Hi-Tec Silver Anti-Bacterial. Sizes: XXS - 5X

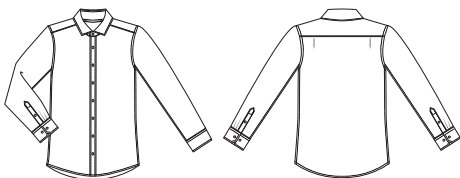


XPRESSO

Womens: 2257 Long Sleeve, **2258** 3/4 Sleeve
100% Cotton With Natural Stretch (Easy care)
Sizes: 6 - 30

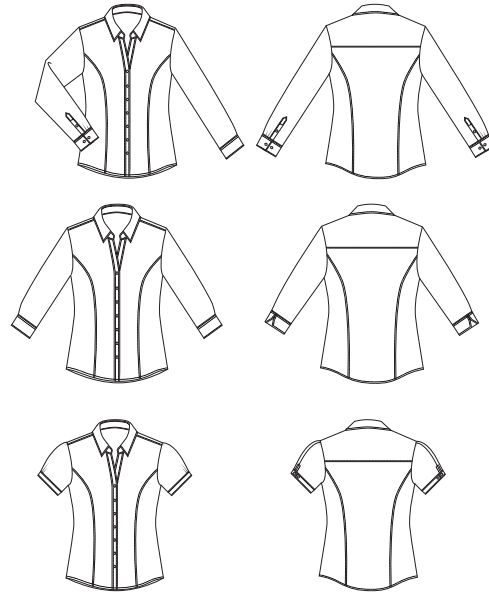


Mens: 4257 Long Sleeve
100% Cotton with Natural Stretch (Easy care)
Sizes: S - 5XL



CITY STRETCH® CLASSIC

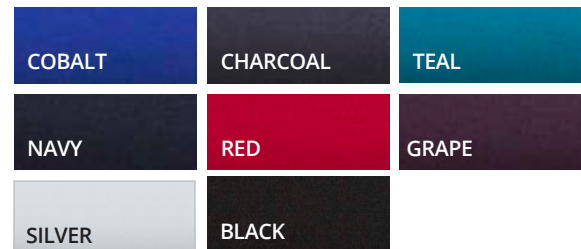
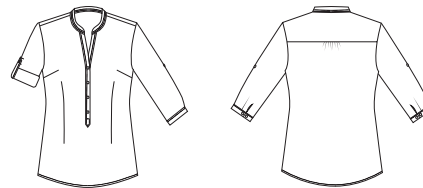
Womens 2260 Long Sleeve, **2261** 3/4 Sleeve, **2262** Short Sleeve
45% Cotton, 37% Polyester, 16% CEO, 2% Lycra.
Sizes: 6 - 30



SO EZY

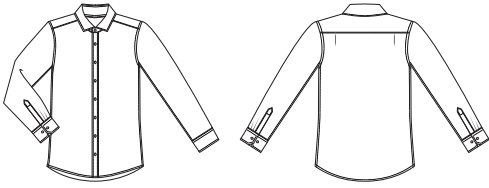


Womens: 2263 3/4 Sleeve
Polyester with Natural Stretch. Sizes: 6 - 30



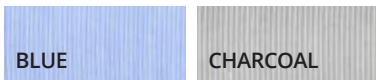
SO EZY

Mens: 4263 Long Sleeve
58% Cotton, 38% Polyester, 4% Spandex. Sizes: S - 5XL



PINFEATHER

Womens: 2264 Long Sleeve, **2265** 3/4 Sleeve, **2267** Short Sleeve. 57% Polyester, 38% Cotton, 5% Lycra
Sizes: 6 - 30



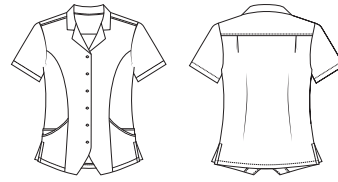
Mens: 4265LS Long Sleeve, **4265SS** Short Sleeve
57% Polyester, 38% Cotton, 5% Lycra
Sizes: S - 5XL



EZYLIN® DUAL POCKET STRIPE



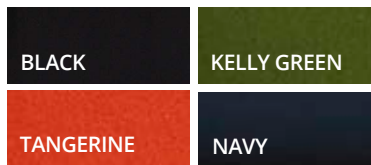
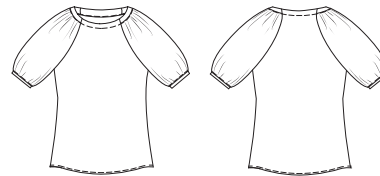
Womens: 2270 Short Sleeve
Breathable Polyester. Sizes: 6 - 30



MARILYN



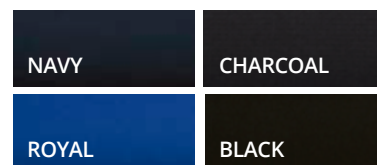
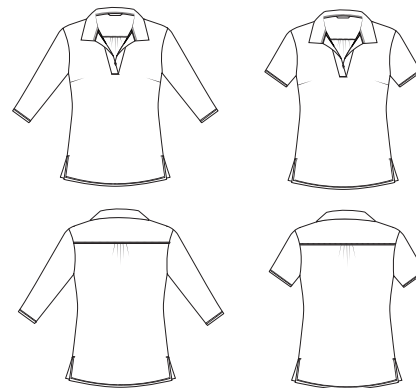
Womens 2271 3/4 Sleeve
Recycled Polyester Luxury Crepe. Sizes: 6 - 26



ELLA



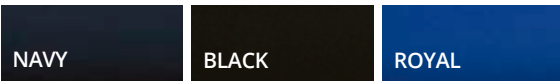
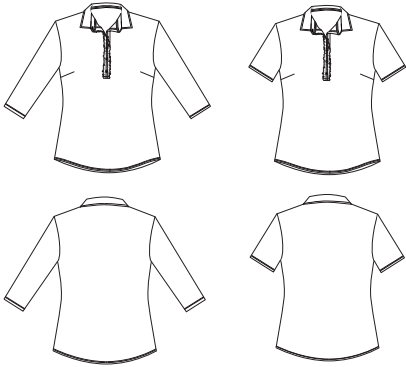
Womens: 2273 3/4 Sleeve, **2274** Short Sleeve
Polyester Matte Jersey. Sizes: XXS - 4X



BELLA



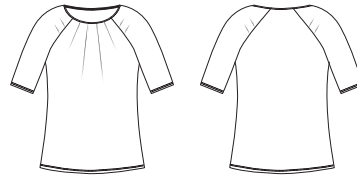
Womens: 2275 3/4 Sleeve, **2276** Short Sleeve
Polyester Matte Jersey. Sizes: XXS - 4X



PETAL PRINT



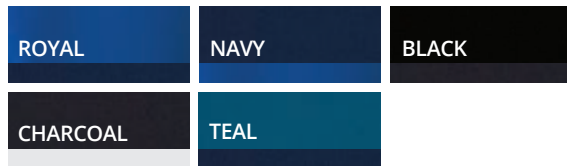
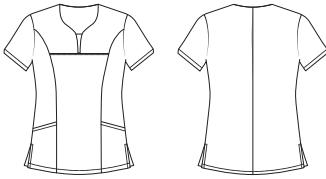
Womens: 2277 Short Sleeve
Recycled Polyester/Polyester, 5% Spandex
Sizes: XXS - 5X



4-WAY STRETCH TUNIC



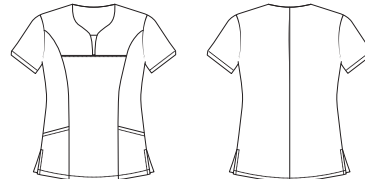
Womens: 2280 Short Sleeve
Recycled Polyester, 5% Spandex Anti-Bacterial
Sizes: 4 - 30



HEART PRINT TUNIC



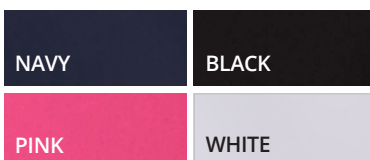
Womens: 2281 Short Sleeve
Recycled Polyester, 5% Spandex Anti-Bacterial
Sizes: 4 - 30



CHRISSY



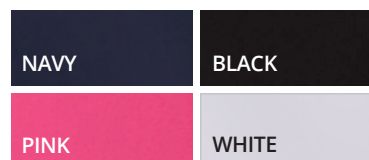
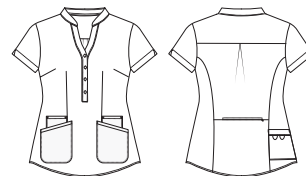
Womens 2283 Drop Shoulder
Recycled Polyester, 5% Spandex Anti-Bacterial
Sizes: XXS - 4X



ZIP BACK TUNIC



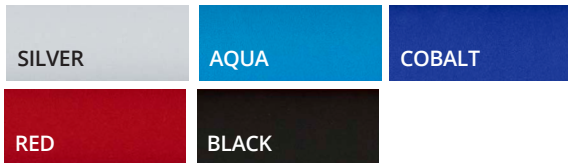
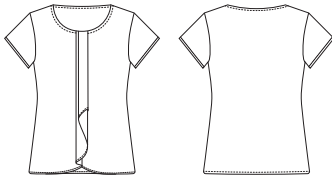
Womens: 2284 Short Sleeve
Recycled Polyester, 5% Spandex Anti-Bacterial
Sizes: 6 - 26



CASCADE



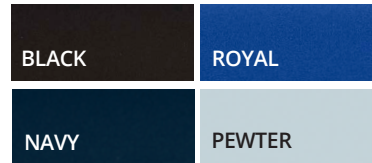
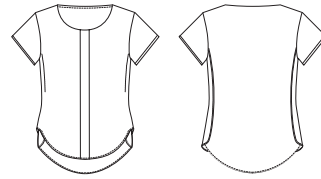
Womens: 2285 Short Sleeve Outer (woven) - Polyester
Inner (knit) - 95% Polyester, 5% Spandex
Sizes: 6 - 26



GRACE



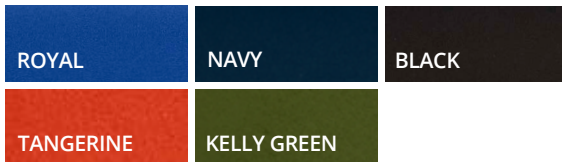
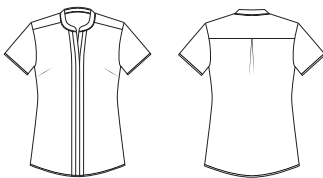
Womens: 2287 Short Sleeve
Outer: Polyester Luxury Crepe. Inner: Polyester/Spandex
Sizes: 6 - 26



ENVY



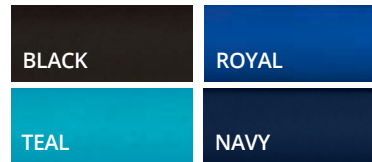
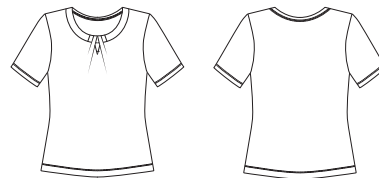
Womens: 2288 Short Sleeve
Recycled Polyester Luxury Crepe. Sizes: 6 - 26



KEYHOLE KNIT



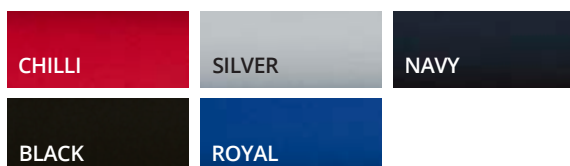
Womens: 2295 Short Sleeve
95% Polyester, 5% Spandex, Crepe Knit. Sizes: XXS - 4X



SMART KNIT



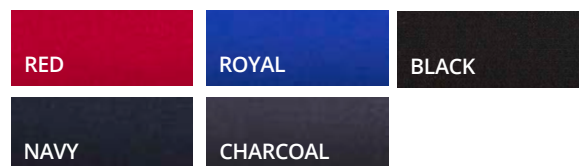
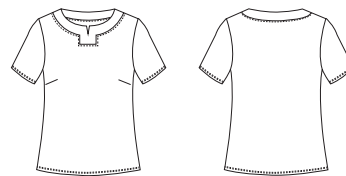
Womens: 2290 3/4 Sleeve, **2291** Short Sleeve
2292 Sleeveless. Polyester Matte Jersey. Sizes: XXS - 4X



KNIT WOVEN

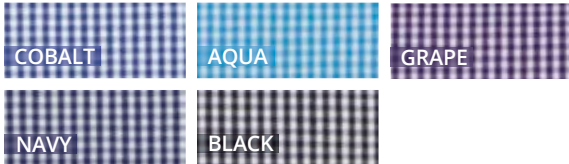
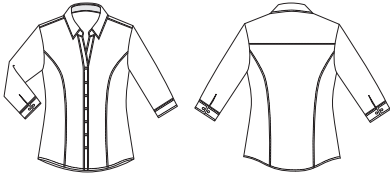


Womens: 2299 Short Sleeve
Front - 100% So Ezy Polyester,
Back - 94% Polyester, 6% Elastane. Sizes: 6 - 26

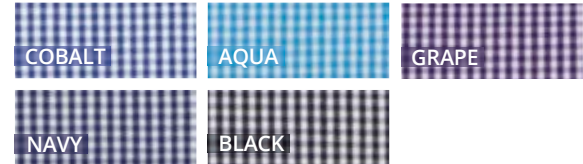
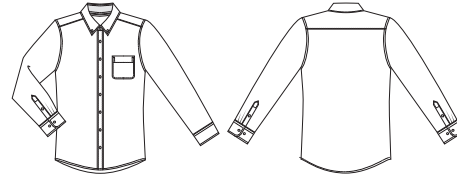


PIPPA CHECK

Womens: 2444 3/4 Sleeve
60% Cotton, 40% Polyester (Easy care)
Sizes: 6 - 26

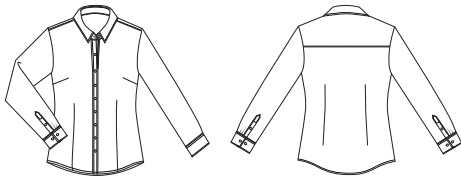


Mens: 4222 Long Sleeve
60% Cotton, 40% Polyester (Easy care)
Sizes: S - 5XL



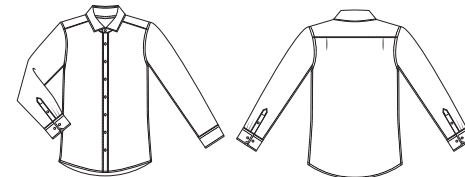
OLIVIA

Womens: 2773 Long Sleeve
65% Cotton, 30% Polyester, 5% Spandex (Easy care)
Sizes: 6 - 30



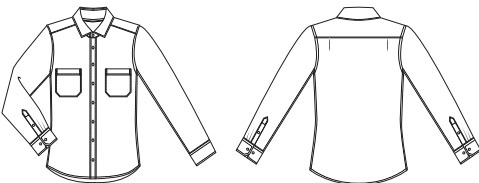
OLIVER

Mens: 4773 Long Sleeve
65% Cotton, 30% Polyester, 5% Spandex (Easy care)
Sizes: S - 5XL

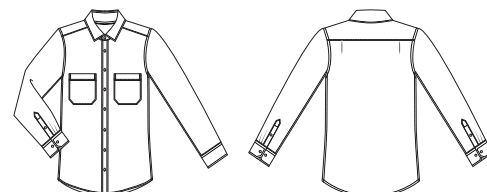


DENIM SHIRT

Womens 2774 Long sleeve
65% Lyocell, 35% Cotton. Sizes: 6 - 26



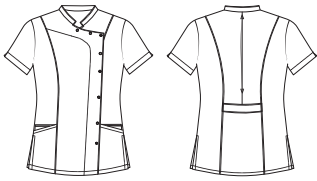
Mens 4774 Long sleeve
65% Lyocell, 35% Cotton. Sizes: S - 5XL



PHARMACY/DENTAL TOP



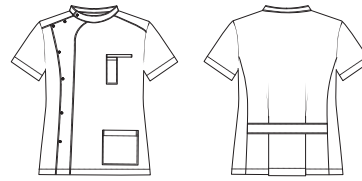
Womens: CA22T Short Sleeve
Recycled Polyester, 5% Spandex Anti-Bacterial
Sizes: 6 - 22



WHITE

BLACK

Mens: CA44T Short Sleeve
Recycled Polyester, 5% Spandex Anti-Bacterial
Sizes: S - 2XL

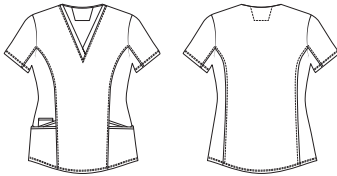


WHITE

CITY ACTIVE 2



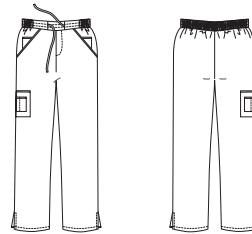
Womens: CA2T Short Sleeve
Body - Recycled Polyester, 5% Spandex Anti-Bacterial
Side Panel - Polyester Anti-Bacterial. Sizes: XXS - 3X



NAVY/NAVY

ROYAL/NAVY

Womens: CA2P
Pants - Recycled Polyester, 5% Spandex Anti-Bacterial
Inner Pocket - Polyester Anti-Bacterial. Sizes: XXS - 5X



NAVY

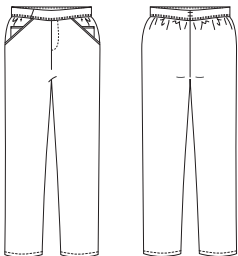
BLACK

CHARCOAL

SO EZY PANT



Womens: CA3P
Recycled Polyester, 5% Spandex Anti-Bacterial
Sizes: XXS - 3X



NAVY

BLACK

CHARCOAL

JOGGER



Womens: CA7P
Recycled Polyester, 5% Spandex Anti-Bacterial
Sizes: XXS - 3X



NAVY

BLACK

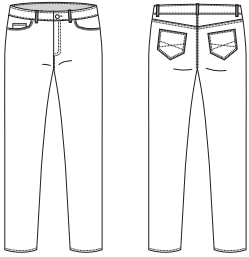
PINK

THE R JEANS



Womens: FJ365

64% Cotton, 34% Recycled Polyester, 2% Spandex
Sizes: 6 - 26



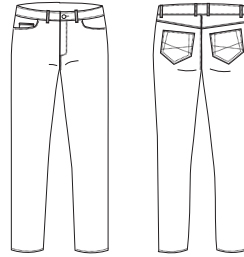
BLACK

LATTE

DENIM

Mens: MJ365

64% Cotton, 34% Recycled Polyester, 2% Spandex
Sizes: 77, 82, 87, 92, 97, 102, 107, 112, 117



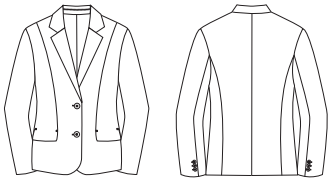
BLACK

LATTE

DENIM

DIANNA

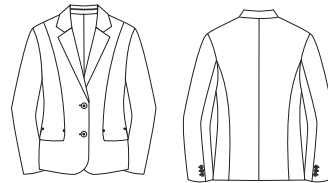
Womens: FJK35-992 Fully lined jacket
Sorbtek® Polyester
Sizes: 6 - 26



BLACK

NAVY

Womens: FJK35-4060 Fully lined jacket
60% Polyester, 40% Wool
Sizes: 6 - 26



BLACK

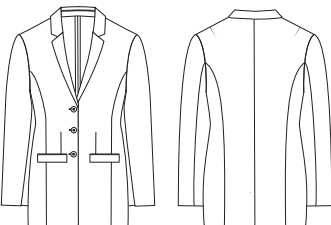
NAVY

CHARCOAL

TILLEY



Womens: FJK361
Polyester/Recycled Polyester
Sizes: 6 - 30

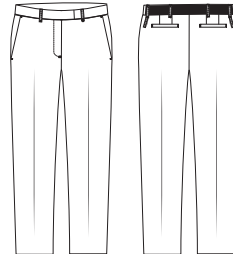


BLACK

NAVY

MIRANDA

Womens: FPA40-992 Pants with exposed elastic back waist. Sorbtek® Polyester
Sizes: 6 - 26

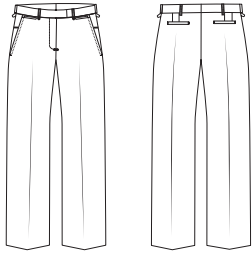


BLACK

NAVY

SAMANTHA

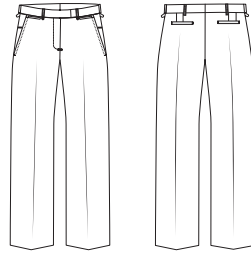
Womens FPA22-992 Classic pants with flexi waist
Sorbtek® Polyester. Sizes: 6 - 26



BLACK

NAVY

Womens FPA22-4060 Classic pants with flexi waist
60% Polyester, 40% Wool. Sizes: 6 - 26



BLACK

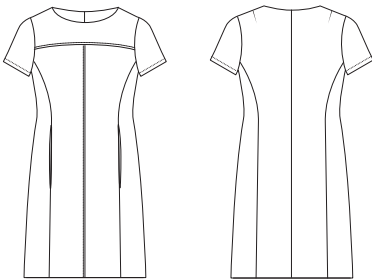
NAVY

CHARCOAL

RILEY



Womens: FDR461
Polyester/Recycled Polyester
Sizes: 6 - 30



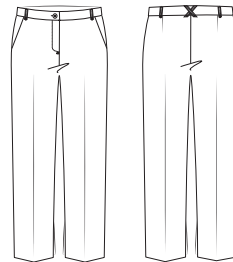
BLACK

NAVY

JESSIE



Womens: FPA561
Polyester/Recycled Polyester
Sizes: 6 - 30



BLACK

NAVY

GRACIE

Womens: FPA41-992 Slim leg pants
Sorbtek® Polyester. Sizes: 6 - 24



BLACK

NAVY

Womens: FPA41-4060 Slim leg pants
60% Polyester, 40% Wool. Sizes: 6 - 24



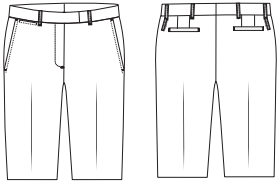
BLACK

NAVY

CHARCOAL

NATASHA

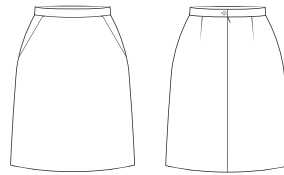
Womens: FPA38-992 Flexi waist short
Sorbtek® Polyester
Sizes: 6 - 26



REMY

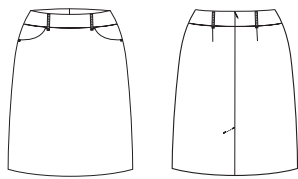


Womens: FSK261
Polyester/Recycled Polyester
Sizes: 6 - 30

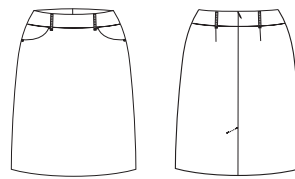


MADDI

Womens: FSK45-992 Knee length front pocket skirt
Sorbtek® Polyester
Sizes: 6 - 26

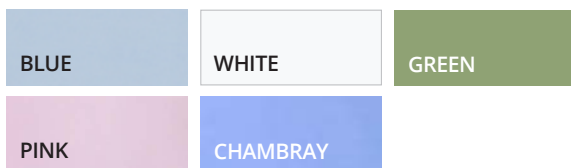
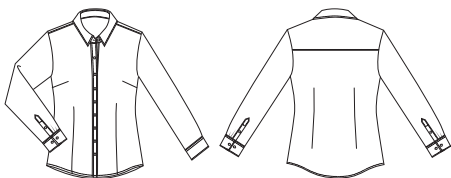


Womens: FSK45-4060 Knee length front pocket skirt
60% Polyester, 40% Wool
Sizes: 6 - 26



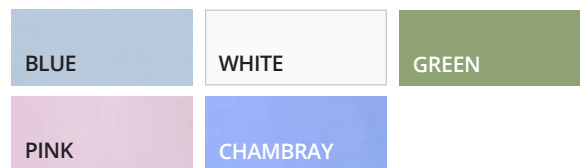
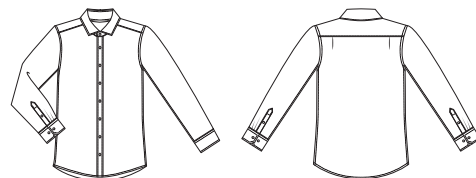
COTTON COMFORT

Womens: FSH70 Long Sleeve
Polyester/Cotton
Sizes: 6 - 30



Chambray available upon request.

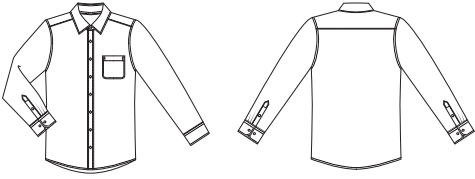
Mens: MSH80 Long Sleeve
Polyester/Cotton
Sizes: S - 5XL



Chambray available upon request.

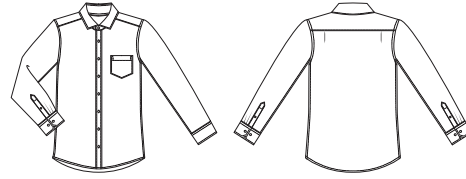
CAPRI CHECK

Mens: 4111 Long Sleeve
100% Superfine Cotton (Easy care)
Sizes: 38 - 52



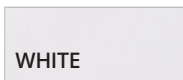
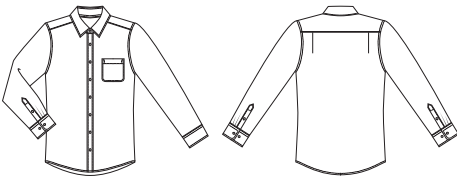
SHADOW CHECK

Mens: 4182 Long Sleeve
55% Cotton, 45% Polyester (Easy care)
Sizes: S - 5XL



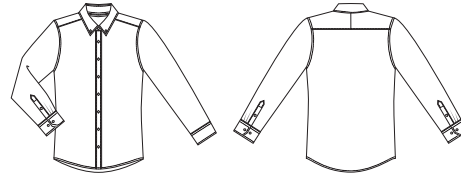
TWILL SHIRT

Mens: 4200 Long Sleeve
60% Cotton, 40% Polyester (Easy care)
Sizes S - 5XL



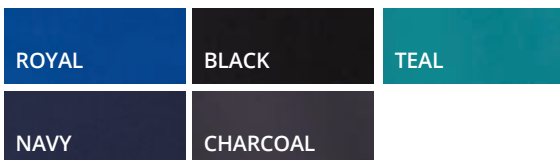
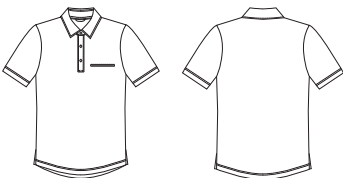
GINGHAM CITY CHECK

Mens: 4207 Long Sleeve
100% Cotton with Natural Stretch (Easy care)
Sizes: S - 5XL

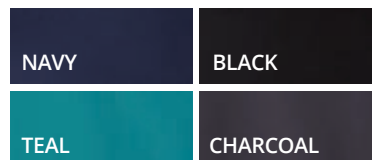
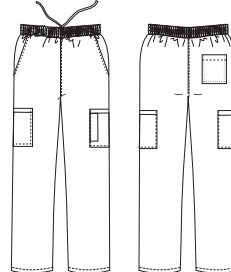


CITY ACTIVE

Mens: CA4T Short Sleeve
Recycled Polyester, 5% Spandex Anti-Bacterial
Sizes: XXS - 5XL

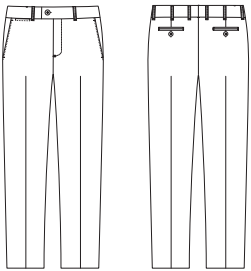


Mens: CA4P Pants
Recycled Polyester / Polyester, 5% Spandex Anti-Bacterial
Sizes: XXS - 5XL



HARRY

Mens: MTRO-690 Flexi Waist Trousers
80% Polyester, 20% Viscose
Sizes: 77R - 107R 87S-132S

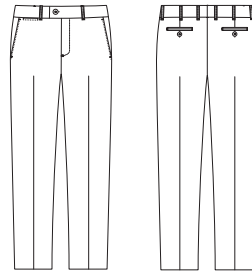


BLACK

NAVY

WILL

Mens: MTRO-4060 Flexi Waist Trousers
60% Polyester, 40% Wool
Sizes: 77R - 107R, 87S - 132S



BLACK

NAVY

CHARCOAL

MORGAN

Mens: MPA-651
Sorbtek® Polyester
Sizes: 77R-117R

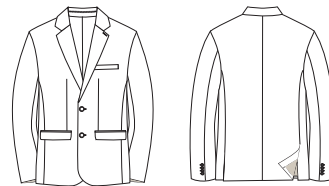


BLACK

NAVY

CHARLES

Mens: MSC2-4060 2-Button Jacket
60% Polyester, 40% Wool
Sizes: 82R - 132R



BLACK

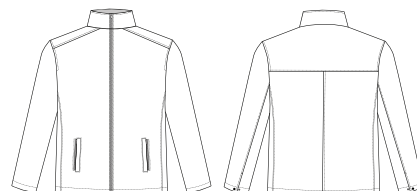
NAVY

CHARCOAL

LONDON



Mens: MJK751
Sorbtek® Polyester
Sizes: S - 5XL



BLACK

NAVY

GARMENT SIZING GUIDE

WOMENS SHIRTS

Size	4	6	8	10	12	14	16	18	20	22	24	26	28	30
Bust /cm	78	83	88	93	98	103	109	115	121	127	133	139	145	151

WOMENS KNIT TOPS

Size	XXS	XS	S	M	L	XL	2X	3X	4X	5X
	6	8-10	10-12	12-14	14-16	18-20	20-22	22-24	24-26	26-28

BUST MEASUREMENTS

Keeping your tape measure untwisted and level, run the tape tight up under your armpits and around the fullest, most protruding point of the bust. Hold one finger under the tape measure to ensure some room for comfort. Keep tape measure taut but not too tight.

WOMENS JEANS

Size	6	8	10	12	14	16	18	20	22	24	26
Waist /cm	63	68	73	78	83	88	94	100	106	112	118
Hip /cm	90	95	100	105	110	115	121	127	133	139	145

WOMENS ACTIVE PANTS

Size	XXS	XS	S	M	L	XL	2X	3X	4X
	6	8-10	10-12	12-14	14-16	18-20	20-22	22-24	26

MENS SIZING

Neck Size	38	39	40	41	42	43	44	46	48	50	52
Size	S	M	M	L	L	XL	XL	2XL	3XL	4XL	5XL
Chest /cm	95	100	100	105	105	110	110	115	120	125	130

NECK MEASUREMENTS

Place the measuring tape around the neck at collar height - just below the Adam's apple. Hold one finger under the tape measure to ensure some room for comfort. Keep tape measure taut but not too tight.

CHEST MEASUREMENTS

Keeping your tape measure untwisted and level, run the tape tight up under your armpits, over the shoulder blades and around the fullest part of the chest. Hold one finger under the tape measure to ensure some room for comfort. Keep tape measure taut but not too tight. Do not puff out your chest.

MENS JEANS

Waist/in	30	32	34	36	38	40	42	44	46
Waist/cm	77	82	87	92	97	102	107	112	117

NOTE: Size charts are body measurements. The garment will measure larger than the body to allow ease and comfort.

WOMENS SHIRTS

ACTION FIT

This is a more relaxed fit, straight through the body and longer. It is generally worn out, not tucked in. Suitable for the slightly fuller figure.

SEMI FITTED

This style is shaped through the body with room to move. It is neither too slim nor too loose and can be worn tucked or untucked. This fit is suitable for most body types.

FITTED

A slimmer silhouette that fits more closely to the body.

MENS SHIRTS

FULL CUT

This is the most generous of all fits. All garments have a box pleat in the back yoke for extra movement.

CLASSIC FIT

Very similar to the Full Cut but narrower in the shoulders and slightly slimmer in the waist. Two side pleats in the back yoke.

TAILORED FIT

Slightly tapered through the body but still quite generous. Suitable for most body shapes. No pleats in the back yoke.

SPORTS FIT

Similar to our Tailored Fit but has a straighter body which is more generous through the waist. No pleats in back.

CITY FIT

Slightly slimmer than our Sports Fit through the chest, shoulders and waist. Longer in length to stay tucked in. Two side pleats in the back yoke.

SLIM FIT

Our slimmest mens fit. A slimmer silhouette that fits more closely to the body.

INDEX

Style DescriptionPage No

WOMENS SHIRTS

2121	Micro Check.....	34, 120
2145	Ezylin®.....	112, 120
2146	Ezylin®.....	35, 112
2147	Ezylin® Meghan.....	5-6, 11, 40, 47, 120
2148	Ezylin® Maternity Meghan.....	47, 120
2149	Ezylin® Overblouse.....	113, 121
2172	City Stretch® Spot.....	89,109, 114, 117, 121
2173	City Stretch® Spot.....	109, 117, 121
2175	City Stretch® Spot Hi-Lo.....	12, 116, 121
2192	Drift Print.....	89, 114, 122
2211	Meghan.....	36, 46, 114, 122
2215	Sophia.....	36, 48, 114, 122
2257	Xpresso.....	24, 123
2258	Xpresso.....	25, 123
2260	City Stretch® Classic.....	32, 71, 123
2261	City Stretch® Classic.....	32, 123
2262	City Stretch® Classic.....	32, 123
2263	So Ezy.....	9, 28-29, 123
2264	Pinfeather.....	17, 27, 78, 124
2265	Pinfeather.....	26, 124
2267	Pinfeather.....	16, 26, 70, 124
2270	Ezylin® Dual Pocket Stripe.....	113, 124
2288	Envy.....	50-51, 126
2444	Pippa Check.....	30-31, 127
2773	Olivia.....	19, 127
2774	Denim Shirt.....	10, 127
FSH70	Cotton Comfort.....	20-21, 70, 72-73, 131

WOMENS TOPS

2221	Pippa Knit.....	9, 38-39, 122
2222	Pippa Knit.....	38, 71, 122
2226	Eva Knit.....	56, 122
2227	Eva Knit.....	56, 122
2271	Marilyn.....	49, 124
2273	Ella.....	11, 44, 124
2274	Ella.....	44, 124
2275	Bella.....	11, 45, 125
2276	Bella.....	45, 125
2277	Petal Print.....	41, 72, 80, 88-89, 125
2285	Cascade.....	57, 126
2287	Grace.....	9, 42-43, 68, 126
2290	Smart Knit.....	55, 66, 126
2291	Smart Knit.....	54-55, 126
2292	Smart Knit.....	55, 126
2295	Keyhole Knit.....	52, 126
2299	Knit Woven.....	9, 53, 126

WOMENS KNITS

2225	City Overknit.....	12, 40, 122
------	--------------------	-------------

WOMENS BOTTOMS

CA3P	So Ezy Pant.....	7, 73, 79, 87, 95, 103, 128
CA7P	Jogger.....	14, 42, 92-93, 128
FJ365	R Jeans.....	5-7,10-13,16-17, 21-22, 129

MENS BOTTOMS

MJ365	R Jeans.....	10-13, 21-23, 25, 28, 129
-------	--------------	---------------------------

Style DescriptionPage No

MENS SHIRTS + TOPS

4102LS	Micro Check.....	34, 58, 120
4102SS	Micro Check.....	58, 120
4111	Capri Check.....	59, 132
4145	Ezylin® Mens.....	11, 35, 65, 113, 120
4182	Shadow Check.....	59, 132
4200	Twill Shirt.....	33, 37, 61, 68, 132
4207	Gingham City Check.....	2, 11, 22-23, 60, 66 132
4222	Pippa Check.....	3, 30-31, 61, 74, 127
4257	Xpresso.....	24-25, 63, 123
4263	So Ezy Check.....	28-29, 60, 74, 124
4265	Pinfeather.....	2, 16, 26-27, 63, 124
4773	Oliver.....	2, 12, 18, 64, 127
4774	Denim Shirt.....	2, 10, 62, 127
MSH80	Cotton Comfort..	2-3, 13, 20-21, 37, 64, 76-77, 131
CA4T	City Active Top.....	65, 72, 96, 132

WOMENS SUITING

FJK35-992	Dianna.....	5, 11, 78, 129
FJK35-4060	Dianna.....	5, 11, 78, 129
FPA22-992	Samantha.....	79, 130
FPA22-4060	Samantha.....	79, 130
FPA38-992	Natasha.....	81, 131
FPA40-992	Miranda.....	79, 129
FPA41-992	Gracie.....	16, 79, 130
FPA41-4060	Gracie.....	16, 79, 130
FSK45-992	Maddi.....	20, 80-81, 131
FSK45-4060	Maddi.....	20, 80-81, 131
FDR461	Riley.....	68-69, 72-73, 130
FSK261	Remy.....	71-73, 131
FPA361	Jessie.....	66, 70, 72-73, 130
FJK361	Tilley.....	66, 69, 72-73, 129

MENS SUITING

MSC2-4060	Charles.....	82, 133
MTRO-4060	Will.....	16, 20, 82-83, 133
MTRO-690	Harry.....	16, 20, 82-83, 133
MJK751	London.....	66, 72-75, 133
MPA651	Morgan.....	66, 72-77, 133

WOMENS SCRUBS

2151	Ezylin Tunic.....	103,105, 111, 113, 121
2174	City Stretch Spot Tunic.....	79, 87, 95, 103, 107-108, 115-116, 121
2230	City Health Active.....	111, 119, 123
2280	4-Way Stretch Tunic.....	84, 96-97, 102, 124
2281	Heart Print Tunic.....	9, 88-89, 91,124
2283	Chrissy.....	94-95, 118, 124
2284	Zip Back Tunic.....	7-8, 14, 78, 86, 92-93, 100, 113, 118, 124
CA22T	Pharmacy/Dental Top.....	7, 109, 128
CA2T	City Active 2 Top.....	98-99, 128
CA2P	City Active 2 Pant.....	80, 91, 94, 102, 128
CA3P	So Ezy Pant.....	7, 73, 79, 87, 95, 103, 128
CA7P	Jogger.....	14, 42, 86, 93, 100-101, 128

MENS SCRUBS

CA4T	City Active Top.....	87, 96-97, 104-106, 132
CA4P	City Active Pant.....	87, 96-99, 104, 106-107, 132
CA44T	Pharmacy/Dental Top.....	108, 128



www.citycollection.com.au

Colours are as close as possible to actual fabric colours but should be used as a guide only. City Collection reserve the right to update and improve the styling of items featured in our catalogue. The design and layout of this catalogue is subject to copyright©.

CITYCOLLECTION

— AUSTRALIA —

DRESSING FOR WORK MADE EASY